



MANUFACTURERS' REPRESENTATIVES

Heating · Ventilation · Air Conditioning Products

LELUND STOCK CATALOG



Grilles, Registers, Diffusers, & VAV Boxes



PENN BARRY™
Exhaust Fans & Gravity Ventilators



Bathroom Fans



Exhaust Fans



Square to Round Transitions



Louvers



Fire Dampers



Roof Curbs

PHONE: 630-627-9886

FAX: 630-627-9941

www.lelund.com

Lelund
1040 North Main St.
Lombard, IL 60148

December - 2013

Supply Ceiling Diffusers

Model 1450

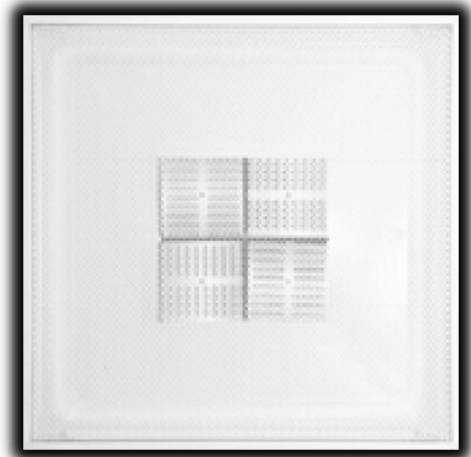
- T-Bar Lay-In Steel
- Square Face Diffusers
- Round Neck
- 2-Cone
- White
- Damper Optional
- T-Bar Plaster Frame Optional
- Aluminum Construction Optional



Stock Sizes	
Panel Size	Round Neck
24"x24"	6"
24"x24"	8"
24"x24"	10"
24"x24"	12"
24"x24"	14"
24"x24"	15"
12"x12"	6"
12"x12"	8"

Model 6600

- T-Bar Lay-In Steel
- Perforated Face Diffusers
- Round Neck
- White
- Damper Optional
- T-Bar Plaster Frame Optional



Stock Sizes	
Panel Size	Round Neck
24"x24"	6"
24"x24"	8"
24"x24"	10"
24"x24"	12"
24"x24"	14"
24"x24"	16"
12"x12"	6"
12"x12"	8"

Supply Ceiling Diffusers

Model SH

- T-Bar Lay-In Steel
- Square Face Diffusers
- Square Neck
- White
- Round Damper Optional
- T-Bar Plaster Frame Optional
- Square to Round Adapter Optional



Stock Sizes	
Panel Size	Square Neck
24" x 24"	6" x 6"
24" x 24"	9" x 9"
24" x 24"	12" x 12"
24" x 24"	15" x 15"
24" x 24"	18" x 18"

Model PLQ

- T-Bar Lay-In Steel
- Square Face Diffusers
- Round Neck
- Plaque Style Diffuser
- White
- Damper Optional
- T-Bar Plaster Frame Optional
- Directional Baffle Optional



Stock Sizes	
Panel Size	Round Neck
24" x 24"	6"
24" x 24"	8"
24" x 24"	10"
24" x 24"	12"
24" x 24"	14"
24" x 24"	15"
12" x 12"	6"
12" x 12"	8"

Supply Ceiling Diffusers

Model RM1

- Steel
- 2-Cone, 2 Position, Round
- Round Neck
- White
- Damper Optional

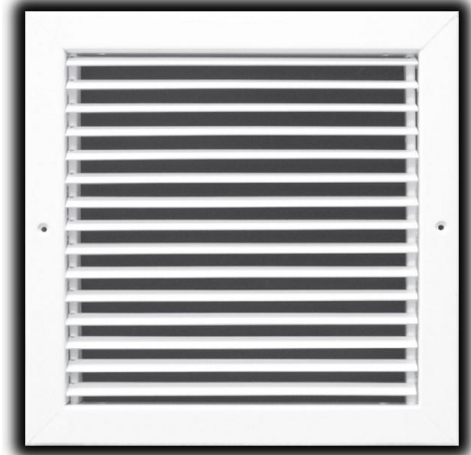
Stock Sizes
Round Neck
6"
8"
10"
12"
14"



Return Ceiling Diffusers

Model S80H

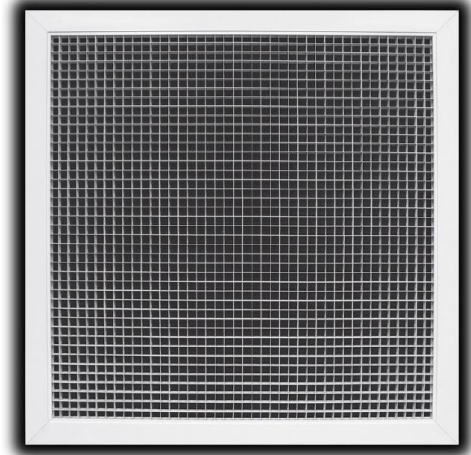
- T-Bar Lay-In Steel
- Louvered Face
- Rectangular Neck
- White
- Square to Round Adapter Optional
- Aluminum Construction Optional
- 22"x22" Available with Filter



Stock Sizes	
Panel Size	Rectangular Neck
24"x24"	22"x22"
48"x24"	46"x22"
24"x12"	22"x10"
12"x12"	10"x10"

Model EGC5

- T-Bar Lay-In Aluminum
- Eggcrate Face
- Rectangular Neck
- White
- Square to Round Adapter Optional



Stock Sizes	
Panel Size	Round Neck
24"x24"	22"x22"
48"x24"	46"x22"
24"x12"	22"x10"
12"x12"	10"x10"

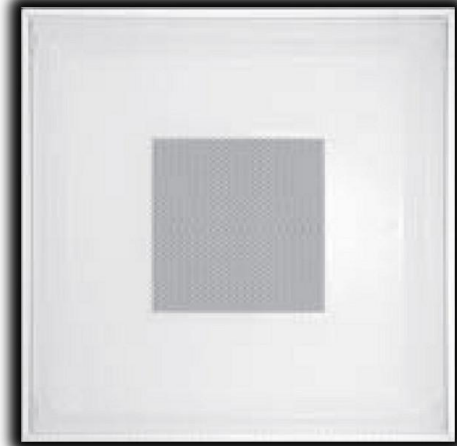
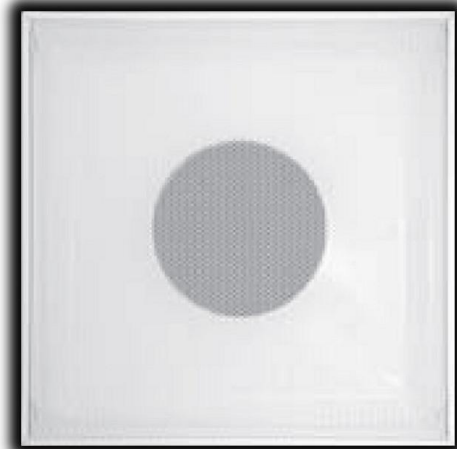
Return Ceiling Diffusers

Model 6490 / 6690

- T-Bar Lay-In Steel
- Perforated Diffusers
- Round or Rectangular Neck
- White
- Damper Optional
- T-Bar Plaster Frame Optional
- Square to Round Adapter Optional

Stock Sizes	
Panel Size	Round Neck
24" x 24"	6"
24" x 24"	8"
24" x 24"	10"
24" x 24"	12"
24" x 24"	14"
24" x 24"	16"
12" x 12"	6"
12" x 12"	8"

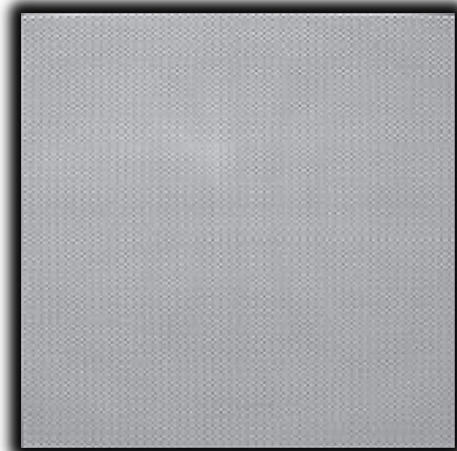
Panel Size	Rectangular Neck
12" x 12"	10" x 10"
24" x 12"	22" x 10"
24" x 24"	22" x 22"



Model 6790

- T-Bar Lay-In Steel
- Perforated Diffuser
- No Backpan
- White
- For Non-Ducted Return

Stock Sizes
Panel Size
24" x 12"
24" x 24"

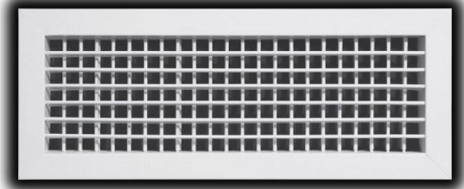




Supply Registers

Model 880V

- Double Deflection Register
- Opposed Blade Damper
- Steel
- White



Available Sizes (Width x Height)							Square Sizes
6"x4"	6"x5"	6"x6"					
8"x4"	8"x5"	8"x6"	8"x8"				
10"x4"	10"x5"	10"x6"	10"x8"	10"x10"			
12"x4"	12"x5"	12"x6"	12"x8"	12"x10"	12"x12"		
14"x4"	14"x5"	14"x6"	14"x8"	14"x10"	14"x12"	14"x14"	
16"x4"	16"x5"	16"x6"	16"x8"	16"x10"	16"x12"	16"x14"	16"x16"
18"x4"	18"x5"	18"x6"	18"x8"	18"x10"	18"x12"	18"x14"	18"x18"
20"x4"	20"x5"	20"x6"	20"x8"	20"x10"	20"x12"	20"x14"	20"x20"
22"x4"	22"x5"	22"x6"	22"x8"	22"x10"	22"x12"	22"x14"	22"x22"
24"x4"	24"x5"	24"x6"	24"x8"	24"x10"	24"x12"	24"x14"	24"x24"
26"x4"	26"x5"	26"x6"	26"x8"	26"x10"	26"x12"	26"x14"	
28"x4"	28"x5"	28"x6"	28"x8"	28"x10"	28"x12"	28"x14"	
30"x4"	30"x5"	30"x6"	30"x8"	30"x10"	30"x12"	30"x14"	
32"x4"	32"x5"	32"x6"	32"x8"	32"x10"	32"x12"	32"x14"	
34"x4"	34"x5"	34"x6"	34"x8"	34"x10"	34"x12"	34"x14"	
36"x4"	36"x5"	36"x6"	36"x8"	36"x10"	36"x12"	36"x14"	
38"x4"	38"x5"	38"x6"	38"x8"	38"x10"	38"x12"	38"x14"	
40"x4"	40"x5"	40"x6"	40"x8"	40"x10"	40"x12"	40"x14"	
42"x4"	42"x5"	42"x6"	42"x8"	42"x10"	42"x12"	42"x14"	
44"x4"	44"x5"	44"x6"	44"x8"	44"x10"	44"x12"	44"x14"	
46"x4"	46"x5"	46"x6"	46"x8"	46"x10"	46"x12"	46"x14"	
48"x4"	48"x5"	48"x6"	48"x8"	48"x10"	48"x12"	48"x14"	

Return Grilles

Model S80H

- 45 Degree Louver Grille
- Horizontal Blades
- Steel
- White

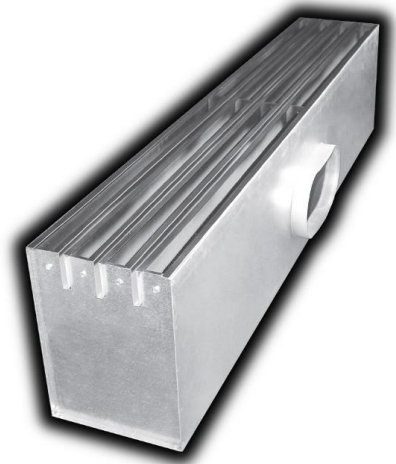


Available Sizes (Width x Height)						Square Sizes
6"x4"	6"x6"					
8"x4"	8"x6"	8"x8"				
10"x4"	10"x6"	10"x8"	10"x10"			
12"x4"	12"x6"	12"x8"	12"x10"	12"x12"		
14"x4"	14"x6"	14"x8"	14"x10"	14"x12"	14"x14"	
16"x4"	16"x6"	16"x8"	16"x10"	16"x12"	16"x14"	16"x16"
18"x4"	18"x6"	18"x8"	18"x10"	18"x12"	18"x14"	18"x18"
20"x4"	20"x6"	20"x8"	20"x10"	20"x12"	20"x14"	20"x20"
22"x4"	22"x6"	22"x8"	22"x10"	22"x12"	22"x14"	22"x22"
24"x4"	24"x6"	24"x8"	24"x10"	24"x12"	24"x14"	24"x24"
26"x4"	26"x6"	26"x8"	26"x10"	26"x12"	26"x14"	26"x26"
28"x4"	28"x6"	28"x8"	28"x10"	28"x12"	28"x14"	28"x28"
30"x4"	30"x6"	30"x8"	30"x10"	30"x12"	30"x14"	30"x30"
32"x4"	32"x6"	32"x8"	32"x10"	32"x12"	32"x14"	32"x32"
34"x4"	34"x6"	34"x8"	34"x10"	34"x12"	34"x14"	34"x34"
36"x4"	36"x6"	36"x8"	36"x10"	36"x12"	36"x14"	36"x36"
38"x4"	38"x6"	38"x8"	38"x10"	38"x12"	38"x14"	38"x38"
40"x4"	40"x6"	40"x8"	40"x10"	40"x12"	40"x14"	40"x40"
42"x4"	42"x6"	42"x8"	42"x10"	42"x12"	42"x14"	42"x42"
44"x4"	44"x6"	44"x8"	44"x10"	44"x12"	44"x14"	44"x44"
46"x4"	46"x6"	46"x8"	46"x10"	46"x12"	46"x14"	46"x46"
48"x4"	48"x6"	48"x8"	48"x10"	48"x12"	48"x14"	

Slot Diffusers

Model PTBS

- White Tees with Black Borders, Center Tee
- Steel Plenum, Aluminum Pattern Controller
- 1/2" Internal Insulation
- Plaster Frames Available



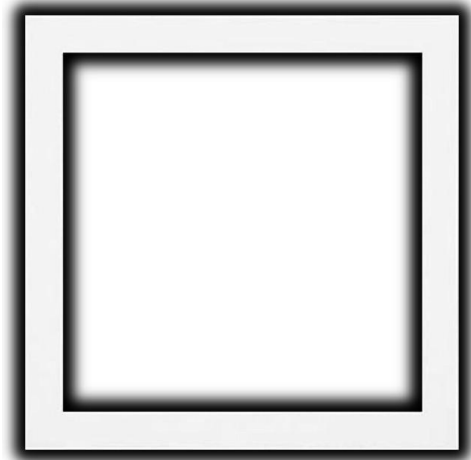
Length	Number of Slots	Slot Width	Available Neck Sizes
2 Foot	2 Slots	1 Inch	6", 8", 10" Oval
4 Foot	2 Slots	1 Inch	6", 8", 10" Oval

Accessories

Model 5HCF23

- Hard Ceiling Frame to Mount Lay-In Diffusers In a Hard Ceiling
- Aluminum Construction
- White

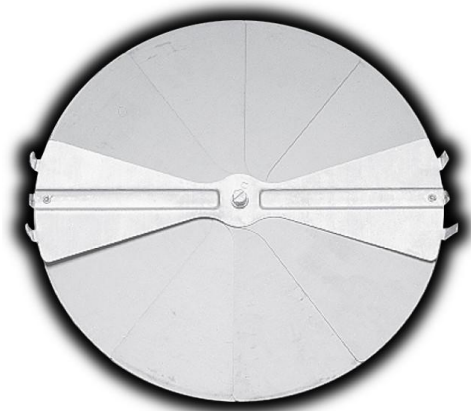
Stock Sizes
Panel Size
24"x24"
12"x12"
24"x12"
48"x24"



Model PRN100

- Neck Mounted Radial Fan Blade
- Steel Mill Finish

Stock Sizes
Round
6"
8"
10"
12"
14"



Spiral Ductwork Registers

- Galvanized Steel Construction
- Mill Finish
- Integral Gasket Seal
- Integral Damper

Stock Sizes

Rectangular Size	Duct Diameter
10"x3"	6" to 24"
14"x4"	8" to 24"
14"x6"	12" to 24"
18"x6"	12" to 24"
24"x4"	8" to 24"
44"x6"	12" to 24"
12"x8"	20" to 36"

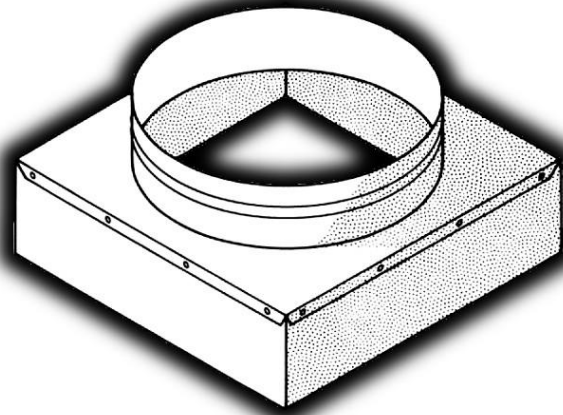




AIR-TRAC[®]

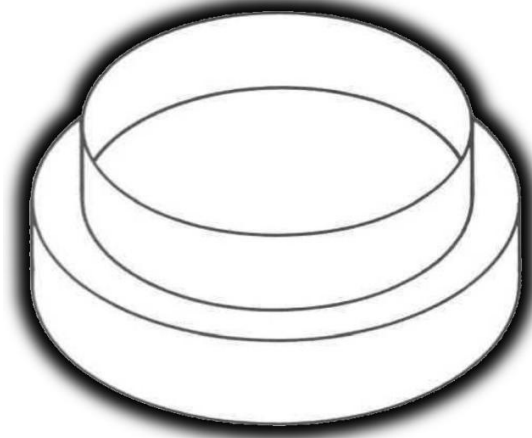
Square to Round Transitions

Stock Sizes	
Rectangular Size	Round Size
6" x 6"	6"
9" x 9"	8"
12" x 12"	10"
15" x 15"	12"
18" x 18"	14"
22" x 10"	6"
	8"
	10"
	12"
22" x 22"	14"
	6"
	8"
	10"
	12"
	14"
	16"
	18"
	20"



Round to Round Reducers

Stock Sizes
Round to Round
6" to 4"
8" to 6"
10" to 8"
12" to 10"
14" to 12"

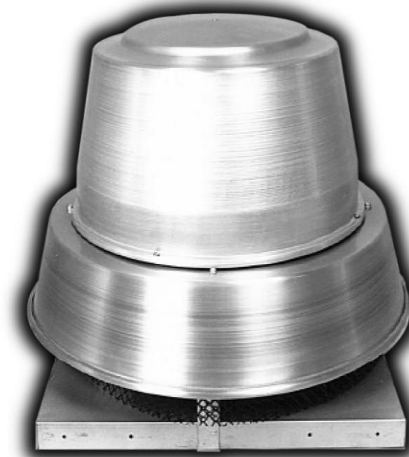




Direct Drive Centrifugal Roof Exhaust Fans

Model CRDA

- Factory Wired Disconnect Switch Standard
- Bird Screen Standard
- Backdraft Damper Optional
- Curb Optional
- Speed Control Optional



Stock Model	Maximum Performance (CFM)			HP
	0" S.P.	0.25" S.P.	0.5" S.P.	
CRDA06C	532	462	375	1/13
CRDA10C	863	752	621	1/13
CRDA13F	1,704	1,527	1,319	1/5
CRDA15H	2,177	2,053	1,860	1/3

Belt Drive & Direct Drive Centrifugal Wall Exhaust Fans

Models CWBA & CWDA

- Factory Wired Disconnect Switch
(Standard for CWDA, Optional for CWBA)
- Bird Screen Standard
- Backdraft Damper Optional
- Wall Flange Optional
- Speed Control Optional (Available on CWDA)



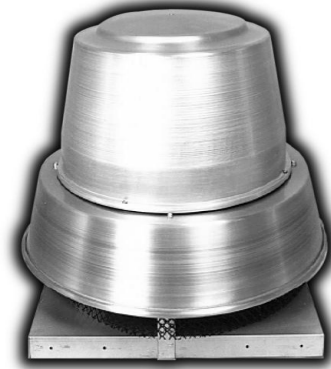
Stock Model	Maximum Performance (CFM)			HP
	0" S.P.	0.25" S.P.	0.5" S.P.	
CWDA10C	816	737	625	1/13
CWDA13F	1,560	1,372	1,182	1/5
CWDA15H	2,038	1,862	1,636	1/3
CWBA20K	4,064	3,773	3,440	3/4



Belt Drive Centrifugal Roof Exhaust Fans

Model CRBCA

- Factory Wired Disconnect Switch Optional
- Bird Screen Standard
- Backdraft Damper Optional
- Curb Optional



Stock Model	Maximum Performance (CFM)			HP
	0" S.P.	0.25" S.P.	0.5" S.P.	
CRBCA08E	367	-	-	1/8
CRBCA08F	492	376	-	1/5
CRBCA10E	487	-	-	1/8
CRBCA10F	653	497	-	1/5
CRBCA10G	1,278	1,200	1,126	1/4
CRBCA12G	1,634	1,510	1,386	1/4
CRBCA12H	1,793	1,680	1,566	1/3
CRBCA12J	2,004	1,905	1,801	1/2
CRBCA12K	2,268	2,180	2,089	3/4
CRBCA15G	2,031	1,891	1,691	1/4
CRBCA15H	2,215	2,095	1,906	1/3
CRBCA15J	2,492	2,399	2,245	1/2
CRBCA15K	2,676	2,597	2,455	3/4
CRBCA15L	3,230	3,174	3,071	1.0
CRBCA18H	3,028	2,749	2,389	1/3
CRBCA18J	3,444	3,213	2,923	1/2
CRBCA18K	3,992	3,822	3,562	3/4
CRBCA18L	4,405	4,264	4,025	1.0
CRBCA18M	5,028	4,914	4,719	1.5
CRBCA18N*	5,448	5,346	5,187	2.0
CRBCA20J	3,986	3,644	3,282	1/2
CRBCA20K	4,534	4,240	3,925	3/4
CRBCA20L	4,895	4,626	4,332	1.0
CRBCA20M	5,700	5,475	5,223	1.5
CRBCA20N*	6,253	6,050	5,824	2.0
CRBCA24J	5,674	4,806	3,806	1/2
CRBCA24K	6,466	5,709	4,946	3/4
CRBCA24L	7,152	6,478	5,780	1.0
CRBCA24M	8,340	7,782	7,159	1.5
CRBCA24N*	9,140	8,643	8,070	2.0

* Only available with 3 phase motors for 2 horsepower and greater



Belt Drive Upblast Centrifugal Roof Exhaust Fans

Model UBCA

- Factory Wired Disconnect Switch Optional
- Bird Screen Optional
- Backdraft Damper Optional
- Curb Optional
- Grease Trough Optional
- Hinge Kit Optional



Stock Model	Maximum Performance (CFM)			HP
	0.5" S.P.	0.75" S.P.	1.0" S.P.	
UBCA12G	1,352	1,185	955	1/4
UBCA12H	1,539	1,396	1,230	1/3
UBCA12J	1,780	1,659	1,527	1/2
UBCA12K	2,127	2,028	1,922	3/4
UBCA15H	1,835	1,533	-	1/3
UBCA15J	2,045	1,804	1,512	1/2
UBCA15K	2,679	2,498	2,323	3/4
UBCA15L	3,004	2,806	2,662	1.0
UBCA18J	2,725	2,319	-	1/2
UBCA18K	3,200	2,879	2,410	3/4
UBCA18L	3,792	3,524	3,246	1.0
UBCA18M	4,452	4,226	3,980	1.5
UBCA20L	4,443	4,149	3,653	1.0
UBCA20M	5,133	4,865	4,586	1.5
UBCA20N*	5,950	5,682	5,454	2.0
UBCA24L	5,348	4,679	-	1.0
UBCA24M	6,383	5,801	5,202	1.5
UBCA24N*	7,089	6,629	6,091	2.0

* Only available with 3 phase motors for 2 horsepower and greater



Belt Drive & Direct Drive Square In-Line Fans

Model SQBA & SQDA

- Factory Wired Disconnect Switch
(Standard for SQDA, Optional for SQBA)
- Drive Guard Standard



Stock Model	Maximum Performance (CFM)			HP
	0.25" S.P.	0.5" S.P.	0.75" S.P.	
SQDA10E	612	536	-	1/10
SQBA10G	899	819	759	1/4
SQBA12G	1,261	1,111	937	1/4
SQBA12J	1,660	1,557	1,435	1/2
SQBA12K	1,939	1,854	1,754	3/4
SQBA12L	2,106	2,027	1,942	1.0
SQBA12M	2,469	2,396	2,330	1.5
SQBA15H	1,942	1,712	1,410	1/3
SQBA15L	2,987	2,850	2,709	1.0
SQBA18K	3,524	3,291	2,993	3/4
SQBA18L	3,932	3,729	3,488	1.0
SQBA20L	4,603	4,286	3,957	1.0
SQBA20M	5,460	5,184	4,913	1.5
SQBA24L	5,972	5,458	4,598	1.0
SQBA24N*	7,823	7,395	6,993	2.0
SQBA30L	7,609	6,693	-	1.0

* Only available with 3 phase motors for 2 horsepower and greater



Fan Accessory Chart

Stock Model	Base (In. x In.)	Backdraft Damper (In. x In.)	Curb (In. x In.)
UBCA12	26x26	18x18	24.5x24.5
UBCA15	26x26	18x18	24.5x24.5
UBCA16	30x30	22x22	28.5x28.5
UBCA18	30x30	22x22	28.5x28.5
UBCA20	34x34	26x26	32.5x32.5
UBCA24	34x34	26x26	32.5x32.5
UBCA30	40x40	32x32	38.5x38.5
UBCA36	46x46	38x38	44.5x44.5
CRBCA06	18x18	10x10	16.5x16.5
CRBCA08	18x18	10x10	16.5x16.5
CRBCA10	18x18	10x10	16.5x16.5
CRBCA12	23x23	15x15	22x22
CRBCA15	23x23	15x15	22x22
CRBCA16	30x30	22x22	28.5x28.5
CRBCA18	30x30	22x22	28.5x28.5
CRBCA20	30x30	22x22	28.5x28.5
CRBCA24	34x34	26x26	32.5x32.5
CRDA06	18x18	10x10	16.5x16.5
CRDA08	18x18	10x10	16.5x16.5
CRDA10	18x18	10x10	16.5x16.5
CRDA12	23x23	15x15	22x22
CRDA13	23x23	15x15	22x22
CRDA15	23x23	15x15	22x22
CWBA12	29.5x29.5	15x15	N/A
CWBA15	29.5x29.5	15x15	N/A
CWBA16	34.5x34.5	22x22	N/A
CWBA18	34.5x34.5	22x22	N/A
CWBA20	34.5x34.5	22x22	N/A
CWDA08	24.13x24.13	10x10	N/A
CWDA10	24.13x24.13	10x10	N/A
CWDA13	29.5x29.5	15x15	N/A
CWDA15	29.5x29.5	15x15	N/A
SQBA10	N/A	14x14	N/A
SQBA12	N/A	18x18	N/A
SQBA18	N/A	28x28	N/A
SQBA24	N/A	36x36	N/A



Direct Drive & Belt Drive Centrifugal Roof Exhaust Fans

Model Domex (DX)

- Factory Wired Disconnect Switch Standard
- Bird Screen Standard
- Backdraft Damper Optional
- Curb Optional



Belt Drive Fans

Stock Model	HP	Maximum Performance (CFM)		
		0" S.P.	0.25" S.P.	0.5" S.P.
DX08B	1/4	1,108	979	836
DX11B	1/4	1,884	1,639	1,329
DX11B	1/2	2,360	2,172	1,959
DX14B	1/2	3,264	2,965	2,627
DX16B	1/2	3,613	3,271	2,900
DX18B	3/4	4,804	4,376	3,923
DX18B	1.0	5,209	4,819	4,403
DX27B	1.0	7,182	6,875	6,079
DX27B*	5.0	12,627	12,447	12,086

* Only available with 3 phase motors for 3 horsepower and greater

Direct Drive Fans

Stock Model	HP	Maximum Performance (CFM)		
		0" S.P.	0.25" S.P.	0.5" S.P.
DX08S/R	1/50 \ 1/30	237 \ 290	114 \ 171	- \ 84
DX10S/R	1/25 \ 1/12	385 \ 559	257 \ 446	168 \ 338
DX11V/S/R	1/25 \ 1/11 \ 1/7	388 \ 503 \ 736	148 \ 320 \ 577	80 \ 201 \ 432
DX11Q	1/5	997	850	685
DX13V/S/R	1/20 \ 1/12 \ 1/6	661 \ 869 \ 1,054	341 \ 632 \ 917	207 \ 418 \ 736
DX13Q	1/4	1,280	1,170	1,053
DX16V/S/R	1/6 \ 1/3 \ 1/2	1,738 \ 2,021 \ 2,346	1,256 \ 1,637 \ 2,014	884 \ 1,256 \ 1,685



Belt Drive Upblast Centrifugal Roof Exhaust Fans

Model Fumex (FX)

- Factory Wired Disconnect Switch Standard
- Bird Screen Optional
- Backdraft Damper Optional
- Curb Optional
- Grease Trough Optional
- Hinge Kit Optional



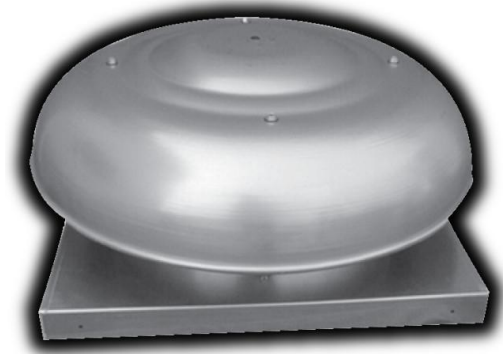
Stock Model	HP	Maximum Performance (CFM)		
		0.5" S.P	0.75" S.P.	1.0" S.P
FX08B	1/4	619	493	275
FX10B	1/4	1,187	961	-
FX10B	1/2	1,638	1,509	1,333
FX13B	1/2	2,118	1,892	1,568
FX14B	1/3	2,019	1,267	-
FX14B	1/2	2,553	2,157	1,394
FX14B	3/4	3,113	2,825	2,464
FX14B	1.0	3,457	3,202	2,919
FX14B	1.5	4,264	3,997	3,726
FX16B	3/4	3,505	3,160	2,678
FX18B	1.0	4,258	3,818	3,319
FX18B	2.0	5,749	5,453	5,123
FX24B	1.0	5,367	4,542	3,116
FX24B	1.5	6,534	5,937	5,185



Gravity Ventilators

Model WCC

- Aluminum Construction
- Bird Screen Standard
- Backdraft Damper Optional
- Curb Optional
- Relief / Intake



Stock Model	Throat Diameter (inches)	Overall Diameter (inches)	Exhaust CFM at 0.125" S.P.	Maximum Intake CFM at 500 FPM
WCC06	7	12	207	250
WCC08	9	18.5	494	700
WCC10	11	21	664	850
WCC12	13	25	1,102	1,250
WCC14	15	28	1,349	1,500
WCC16	17	30	1,668	1,650
WCC18	19	32	2,055	1,800
WCC20	21	37	2,519	2,550
WCC24	25	45	3,288	3,800



Fan & Gravity Ventilator Accessory Chart

Model	Base (In. x In.)	Backdraft Damper (In. x In.)	Max. Curb Size (In. x In.)
DX06B	18.5x18.5	11.25x11.25	17x17
DX08B	18.5x18.5	11.25x11.25	17x17
DX11B	20.5x20.5	15.75x15.75	19x19
DX12B	24.75x24.75	15.75x15.75	23.25x23.25
DX14B	24.75x24.75	15.75x15.75	23.25x23.25
DX16B	28.5x28.5	19.75x19.75	27x27
DX18B	28.5x28.5	19.75x19.75	27x27
DX24B	33.5x33.5	24.75x24.75	32x32
DX27B	36.5x36.5	27.75x27.75	35x35
DX30B	36.5x36.5	27.75x27.75	35x35
DX36B	44.5x44.5	35.5x35.5	43x43
DX06R	18.5x18.5	8.75x8.75	17x17
DX08S/R	18.5x18.5	8.75x8.75	17x17
DX10S/R	18.5x18.5	11.25x11.25	17x17
DX11V/S/R/Q	18.5x18.5	11.25x11.25	17x17
DX13V/S/R/Q	18.5x18.5	11.25x11.25	17x17
DX16V/S/R/Q1/Q2	20.5x20.5	15.75x15.75	19x19
DX18V	28.5x28.5	19.75x19.75	27x27
FX08B	24.75x24.75	15.75x15.75	23.25x23.25
FX10B	24.75x24.75	15.75x15.75	23.25x23.25
FX12BH	24.75x24.75	15.75x15.75	23.25x23.25
FX13B	24.75x24.75	15.75x15.75	23.25x23.25
FX14B	24.75x24.75	15.75x15.75	23.25x23.25
FX16B	28.5x28.5	19.75x19.75	27x27
FX18B/FX18BH	28.5x28.5	19.75x19.75	27x27
FX24B/FX24BH	33.5x33.5	24.75x24.75	32x32
FX27B	36.5x36.5	27.75x27.75	35x35
FX30B	36.6x36.5	27.75x27.75	35x35
FX36B	44.5x44.5	35.5x35.5	43x43
FMX50B	59x59	49.5x49.5	57.5x57.5
WCC06	15x15	8.75x8.75	13.5x13.5
WCC08	18.5x18.5	11.25x11.25	17x17
WCC10	18.5x18.5	11.25x11.25	17x17
WCC12	20.5x20.5	15.75x15.75	19x19
WCC14	24.75x24.75	15.75x15.75	23.25x23.25
WCC16	24.75x24.75	15.75x15.75	23.25x23.25
WCC18	28.5x28.5	19.75x19.75	27x27
WCC20	28.5x28.5	19.75x19.75	27x27
WCC24	33.5x33.5	24.75x24.75	32x32
WCC30	36.5x36.5	27.75x27.75	35x35
WCC36	44.5x44.5	35.5x35.5	43x43
WCC42	52.5x52.5	43.5x43.5	51x51
WCC48	59x59	49.5x49.5	57.5x57.5

BROAN®

Ceiling Exhaust Fans

- Roof / Wall Caps Optional
- Speed Control Optional
- Thermostat Optional

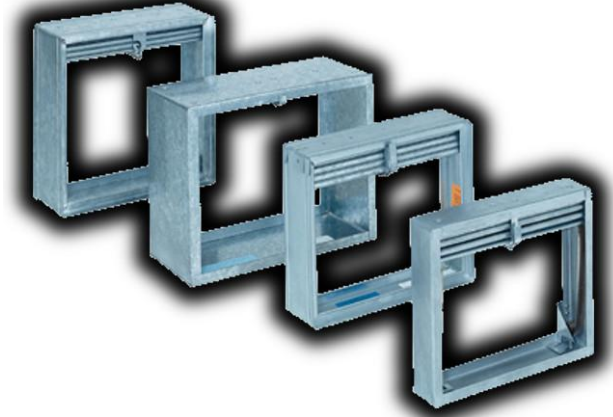
Stock Model	Performance at 0.125" S.P. (CFM)	Duct Connection (Inches)	Features
670	50	3	
671	70	3	
684	80	4	
676	110	4	
655	70	4	Heater/Fan/Light
696	100	4	Fan/Light
XB110	110	6	
L100	109	6	In-Line Kit Available
L150	157	6	In-Line Kit Available
L200	210	8	In-Line Kit Available
L250	259	8	In-Line Kit Available
L300	308	8	In-Line Kit Available
L400	434	18.5x4.5	In-Line Kit Available
L500	514	18.5x4.5	In-Line Kit Available
L700	701	18.5x4.5	In-Line Kit Available
L900	901	12x8	In-Line Kit Available
L1500	1,513	12x8	In-Line Kit Available



LEADER

Fire Dampers

- All Spring Loaded
- Horizontal / Vertical
- Access Doors Optional



Stock Model	Type	Sizes Available
U-205-CR	Round	6" Round – 14" Round
U-205-A	Type A	6"x6" – 30"x30"
U-205-B	Type B	6"x6" – 24"x24"



Louvers

Model DAL2-FF

- 2" Deep
- Aluminum Construction
- 1" Flange
- Mill Finish

Stock Sizes
Stock Sizes Available
10"x10"
12"x12"
14"x14"
16"x16"
18"x18"
20"x20"
22"x22"
24"x24"
28"x28"



Backdraft Dampers

Model 411 / 611

- Motor Kit Available

Stock Sizes	
Stock Sizes Available	
8"x8"	24"x24"
10"x10"	26"x26"
12"x12"	28"x28"
14"x14"	30"x30"
15"x15"	32"x32"
16"x16"	34"x34"
18"x18"	36"x36"
20"x20"	44"x44"
22"x22"	

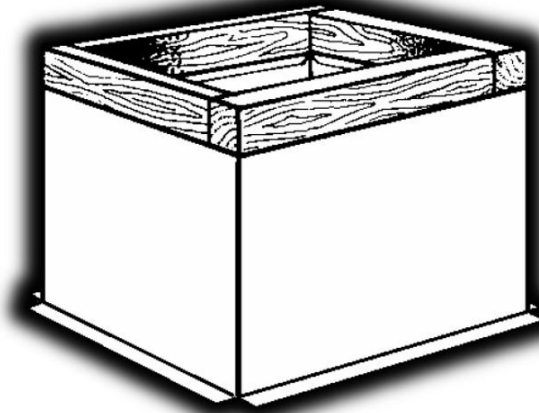


Roof Curbs

Model PC-2

- Galvanized Steel Construction
- 12" High
- Insulated

Stock Sizes
Stock Sizes Available
17"x17"
18.5"x18.5"
22"x22"
23.75"x23.75"
27"x27"
28.5"x28.5"
32"x32"
38.5"x38.5"





Gas-Fired Unit Heaters

Model Hot Dawg (HD)

- Natural Gas-Fired Unit Heater
- Power Vented



Stock Model	Input (Btu/hr)	Output (Btu/hr)	Entering CFM	Horsepower
HD30	30,000	24,000	505	1/15
HD45	45,000	36,000	720	1/15
HD60	60,000	48,000	990	1/12
HD75	75,000	60,000	1,160	1/12
HD100	100,000	80,000	1,490	1/12
HD125	125,000	100,000	1,980	1/8